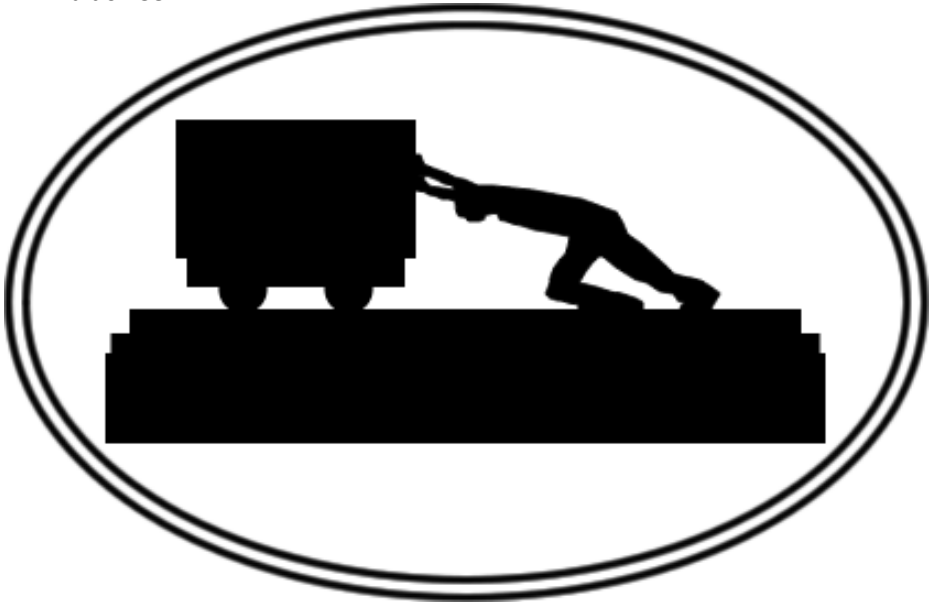


Silverdale Village News

Edition 38



March 2014 - May 2014

Your News...Your Views

Chair's Report

February 2014

Dear Residents,

Newsletter – December edition

Firstly – may I on behalf of the Parish Council apologise for the lateness of the December 2013 village newsletter. Although the edition date clashed with the exchange between the out-going & in-coming Clerk, the edition ought to have been delivered before the Christmas period.

Allotments update.

The discussions between the Parish council and Newcastle Borough Council over the allotment transfer of duty to the Parish Council are progressing well. Because of the complexities associated with the Acre site was decided collectively to concentrate on the Park Road site initially.

The Park Road Allotment Association has re-formed and discussions are being held between the association and the Parish Council. I'm very pleased to report that these too are extremely positive and I'm very hopeful that the association will be self-managing the site very soon.

Silverdale Athletic Football Club – New Community Facility

At long last the community facility has finally been finished, the official opening ceremony held on February 14th and it is now open for business.

It is a facility that's open for a variety of uses within the community and for the community.

Its location, adjacent to the new housing development & Country Park, can not be bettered!

Management of the facility is by Silverdale Athletic Football Club who has been waiting for over 30 years for the opportunity to have their "official home" directly in the village. Credit must go to Marco Dukic and the whole of the Silverdale Athletic management team of the club for their persistence & endeavour over the years. It is a fitting tribute and legacy for the industrial past of Silverdale Colliery for which we are all proud!

On behalf of the Parish Council, I'd like to wish them the very best for the future and would encourage the residents of Silverdale to visit the facility & maybe consider become a member of the club in order to take full advantage of what the facility has to offer.

Community Speed Watch initiative

The speeding of vehicles throughout the village is a common complaint heard. Through the work, effort & proposal of Councillor Colclough, the Parish Council has provided the funds to purchase a hand-held speed detection camera & all associated equipment for use by the members of the Silverdale Speedwatch Scheme. Unfortunately, the number of volunteers of this scheme is reported to have dropped from the initial interest shown, by almost 50%.

This is particularly disappointing as the initiative has yet to be put into practice. A plea is made to ask residents of Silverdale to take part. Full training is provided. Should you be interested in improving road safety through the village could I ask that you make contact with the Clerk of the Council who will pass on your contact details to Councillor Colclough, who will then be in touch in order to provide you with further information?

Aspire Housing development - consultation exercise.

Aspire Housing have identified a number of areas, primarily within the central area of the village, for possible social housing development. Information has been given to the Parish Council for consultation & comment. However, the Parish Council is of the opinion that the views of all residents should be sought and also be made known.

The plans for each of the developments are displayed in the Library along, with a comments book.

Please study the proposals and leave your comments, which will be fully considered at our April Parish Council meeting.

Continued on page 4..

The areas proposed for development are: -

- High Street - between house number's 246 & 256
- Vale Street - adjacent & opposite to the Crescent.
- Chapel Court - behind working men's club/library & between shops.
- Church Street - adjacent to Roebuck public house
- Vale Street - adjacent to house number 16.

Could I ask you please to view the development proposals and enter your thoughts & opinions into the comments book provided?

E mail: silverdaleparish@hotmail.com

Website: www.silverdaleparish.org.uk

M A Nadin

Garners Garden Centre

All Your Seasons Needs at Your Local Garden Centre

Trees, shrubs, compost, seed potatoes, bedding plants, perennials, houseplants, OUTBACK BBQ's and accessories, Pet department, gift vouchers, garden furniture

- * ***Delivery service***
- * ***Easy parking***
- * ***Disabled access***



Open daily 9.00am to 6.00pm
and Bank Holidays

Cemetery Road Silverdale

Simon Timmis Joinery and Tiling

- Ø Kitchen Design and Fitting Service
- Ø Ceramic Tiling
- Ø Flooring – Tiles and Laminate
- Ø Internal Doors and Frames
- Ø Skirting Boards, Architraves etc
- Ø Loft Boarding
- Ø Room Renovations
- Ø Outdoor Decking Areas

Fully Insured

**I offer a high quality, reliable
service at an affordable price**

Please call Simon

T 01782 680017 M 07733 366191

Silverdale History Group

Spring & Summer Schedule 2014 7.45pm at Silverdale Workingmen's Club

11 March: More Photographs of Silverdale: help to identify photographs from the archive

25 March: What the Papers Said: crime and punishment in Victorian Silverdale. **Speaker:** Brian Nixon

8 April: Betley: two films about Betley and its two big houses - Betley Hall and Betley Court.

**Summer Schedule 2014 to be fully confirmed with speakers
Subjects confirmed**

Local History Fortnight

History of Newcastle in the 20th Century

History stroll in Silverdale

**Summer schedule 22 April - 8th July 2014
meetings always held on 2nd and 4th
Tuesdays of the month**

What's on at Cornerstone Community Centre?

Do you know that our café is open Tuesday to Saturday? Pop in to see us and try one of our home made specials, like stew with dumplings or curry, or how about a traditional filled oatcake? There's always a cake to finish off with if you've got a sweet tooth too! Our prices are low and our customer service is top quality, so please come and see us.

Do you have children? We have 3 exciting groups each week. For babies and pre school children we have Bizzy Beez every Tuesday and Thursday from 9:30-11:30am. Bring you little ones to our fun packed play session with lots of activities, toys and there's always craft/messy play and a snack too. Just £1.50 per family.

Is your child at primary school; then the Big Fish Kids Club is worth a try. It runs on Friday's from 6-7pm, with lots of sporty and fun games and crafts too, and a yummy tuck shop. Keep an eye out for our holiday clubs too.

Friday evenings is also Underground Youth club, 7:30-9pm. Instead of hanging around the streets, your high school youth can come to our group to chill out, play pool, table tennis, X-box, PlayStation 3, Wii, Manga drawing, Basketball, enjoy trips out and much more.

If you're young at heart you could try the Age Uk gentle armchair based exercise class on Monday mornings at 10am, or how about getting involved in our Cake Decorating and Card Craft classes on Tuesday afternoons?

Monday afternoons we are joined by Newcastle College to run Maths and English classes for adults.

Wednesday morning is our computer club, where beginners or experienced people can get together to learn new computer skills.

We also run a Jobs Club on Fridays from 10am- 12, where the team and ASPIRE are here to help you search on-line for jobs, fill in applications, create or update a CV and any other help you need. Friday is also Foodbank Day; if you are struggling or know someone who is then they can come on a Friday and speak to one of our volunteers to see whether foodbank can help. ASPIRE also run an advice surgery from 10-2 and are happy to offer advice and support too.

Finally, if you are on the look out for a bargain, or are getting rid of unwanted items; why not give our friendly charity shop a try. Open Monday to Saturday 10am-2pm our delightful team are always ready to offer a smile and a chat. We offer the cheapest prices in town. Check out our 50p clothing rail!

For more information, pop into the centre and speak to Michelle, or call 633821, or email cornerstonecommunitycentre@yahoo.co.uk

Michelle Fahey
Community Development Manager
Cornerstone Community Centre
Mill Street
Silverdale
ST5 6PF
Tel: 01782 633821



THE VINE INN

High St Silverdale

Open 12pm—Midnight

Mon - Sat

***Mark and Kelly welcome
old and new customers***

*Free function room hire

*Poker—Mondays

*Men's Darts—Tuesdays

REAL ALES



VINTAGE AND HAND-MADE FAIR

Cornerstone, Mill Street, Silverdale

10am—4pm Saturdays

3 Rooms of Crafts, Vintage Retro, Art,
Cakes and Café.

FREE ADMISSION

Come and Step back in Time!

Call Lindsey 660628/07967024744

FOR FUTURE DATES



Affordable Luxury
In Hair & Beauty
Stay Gorgeous For Less

53 High Street
01782 614449



LES MUIR JOINERY

FRIENDLY, LOCAL AND RELIABLE
JOINER FOR HIRE AT
COMPETITIVE PRICES



FROM DOORS,
FLOORING AND SKIRTING BOARDS TO
FITTED KITCHENS, BEDROOMS AND
LOFT CONVERSIONS - NO JOB TOO
SMALL!

CITY AND GUILDS QUALIFIED

CALL LESLIE FOR A FREE QUOTE

MOB: 07510 338950

TEL: 01782 624561



SILVERDALE ATHLETIC F.C.

FOUNDED 1980

Kents Lane Community Building, Silverdale, Newcastle Staffordshire ST5 6TA

It's been a fantastic start to the New Year for Silverdale Athletic by moving into the new Kents Lane community facility at Sutton Avenue, organising with Newcastle Borough Council (NBC) the opening by Lord John Prescott and with the football sides all starting the year in winning ways.

In such a short period of time we have fitted out the kitchen, bar, function room and laundry, we have obtained a bar licence, a hygiene rating of 5 for the kitchen and successfully negotiated a four year sponsorship deal for our three senior sides by the new owners of the Crown Inn Joules Brewery.

The club is now managing two local football pitches Kents Lane and Jollees field, are intentions are to maintain them to the high standard we received them in, and will endure to improve them at every opportunity. We want the people of Silverdale to feel proud of their facilities, help us to be responsible for them so they are with us for generations to come.

Support

We offer Silverdale Athletic social membership at £25 for the year, where members are entered into a monthly £100 draw. Silverdale Athletic weekly Tote choose two numbers between 1 & 40 drawn every Monday Night pay-out is 75% of the takings.

What's On

We have seven successful sides under 8's, 12's, 13's, 17's and three adult teams, we will be looking to build on these for next season as all ages step up a year. If you are interested in helping with an u 8's or u 11's for next season contact us or call in on match days to discuss . We are also talking to interested girls/women to join a league next year.

Saturday morning football classes by FA trained coaches, age groups four to nine between 10am & 11am and ten to fifteens 11am to 12pm all welcome.

Kents Lane Community Building licensed function room is available for hire sitting comfortably up to 100 people.

contact Steve Hall 07527 908761 for availability. We have fitness classes including Zumba, Yoga and Circuit training on mornings, afternoons, and evenings contact Karl Muncey 07947 566670 for further information and availability.

Contact details

Facebook - Silverdale Athletic FC

Webpage – www.silverdale-athleticfc80.co.uk

Marko Djukic 07940 351925

Brian Eardley 07702 632267

News from Silverdale Library

As spring arrives there are lots of activities happening in your local library. The **Book Group** has been resurrected and now meets on the first Monday of the month. It starts at 2pm and runs for an hour – or longer if the discussion goes on a bit! Free refreshments are provided – come along if you fancy giving it a try – you will be made very welcome. You can suggest books for you all to read too – we will try to get you copies of anything you want to try. This month's book is ***The Mistress's Revenge*** by **Tamar Cohen**, It's a real page-turner of a book, you are constantly thinking – “Oh no, what will she do next?” Come in and get yourself a copy!

If you'd rather do something a bit more hands-on – why not come along to our **Knit and Natter, Crochet and Chatter Group**? They are going from strength to strength and now meet at 1pm on a Friday afternoon and go through to 4pm. You can come along for the afternoon – or just drop in for half an hour, it's up to you. You can share your expertise – or learn from the other participants if you need help with something.

As you may have heard, Staffordshire County Council is holding a consultation on the libraries in the area. If you'd like to have your say – please have a look on the website at www.staffordshire.gov.uk/connecteditlibraries to let them know what you need from your library service. Alternatively you can pop in the library and fill in a short form. We need your support and ideas for the future!



Did you know that you can download books and magazines for free without coming into the library? In addition to that – they have now added Audio Books! Just check out the selection – go to the **Libraries** page from the Staffordshire County Council website and look for the section called **e-Books, e-Mags & e-Audio**. That will take you through the process step-by-step. It's all free – so what are you waiting for?

Berni Williams – Library Supervisor

Silverdale PPG

We are coming to the end of our annual Winter Warmth Campaign. This year we have had printed our own thermometer cards which included information about our surgery and where to go for different illnesses depending on severity and time of day. We also highlighted telephone numbers for useful agencies and local dispensing chemists. Representatives from Beat The Cold came to both surgeries to chat and give guidance, information and help to get cheaper fuel tariffs, so saving money! North Staffs Carers Association now have permanent display boards in both surgeries to promote the services they offer, what's on when and how they can support carers. If you feel they could be of help then check the notice boards. Julie and Liz, from N.S.C.A., gave much valued support to individuals they met in the waiting rooms. The D.A.S.H. (Development for Adolescent Sexual Health) team visited the Parade in January and engaged with fifteen or so young adults. The feedback we have received from patients and the professionals involved has been very rewarding and justifies the organisation required to put on these events.

During the month of March we are beginning our female cancer campaign. Last year we focused on breast screening and we were delighted with the increased uptake. This year our focus will be cervical screening. Again there will be promotional displays at both surgeries giving advice and guidance on female cancers in general. Members of the Patients Group will be in surgery talking to patients about cervical cancer and distributing relevant leaflets giving detailed information.

Hopefully during April, May and June we will be extending our Basic First Aid topic to include a major concentration on childhood illnesses; what to look for, what is the best treatment, when and where to seek help and advice. Any events that are put on will be well advertised in surgery and in the local library. We shall, as last year, be covering general First Aid in the home and garden. We shall again display information on desirable vaccinations for some holiday destinations abroad.

Finally, a reminder to those who would like to kick the habit! No Smoking Day this year is on March 12th. There will be lots of promotional material in both surgeries. The Practice Nurses will also be offering "Stop Smoking" courses to support Individuals.

If you think you may have something to offer and would like to contribute to the P.P.G. then please contact Wendy Moreton or Helen Austin on 0300 123 1466.

Alan, Elaine and Liz. P.P.G.

Smylers Pre School/Wraparound

Coming soon..... Smylers holiday club!

Smylers will be opening a holiday club at Easter.

Open 50 weeks of the year. 8.30a.m. until 5.30 p.m.

£18 a full day. £10 per half day. Discounts for siblings and full week bookings.

Booking forms available from St Luke's Primary School, contact Mrs Diane Smy for details.

Tel: 01782 297445

Robert James Egan Photography

Weddings / Portraiture / Commercial

rjephoto.co.uk
info@rjephoto.co.uk

Dme plumbing and heating
For every aspect of plumbing and heating

Over 18 years experience,
Gas safe registered engineer-548059

Professional reliable
service

24hr
No callout charge

Contact David egan on- 07885262541
254 bradwell lane, newcastle, staffs



ELIM PENTECOSTAL CHURCH
HIGH STREET, SILVERDALE

THURSDAYS 7PM

*New morning group at
9.30am*

For details tel. Kym
07720988701

Dog Portrait Photography

Home visits available and local
venues held monthly



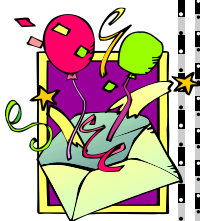
07757714898

Packages start from £35
adrianpwarren@virginmedia.com

**The
Cards
Shop**

17 The Parade
Silverdale

CARDS
FOR EVERY
OCCASION



The largest and widest
selection in the
village

*Anniversary
Congratulations
Birthday*

Dance Sessions

Bill Whitby has asked me to remind everyone that he and his wife are still hosting dances at Silverdale Working Men's Club on Wednesdays from 8.00 – 10.00pm.



Ballroom, Latin and
Popular Sequence

Dancing takes place
and admission is £2 a
person.

Further information contact
Bill on 622732
email: williamwhiby@btinternet.com

St. Luke's CE Primary School

Music

MEN Arena

On Monday 3rd February St. Luke's choir travelled to the MEN Arena in Manchester to take part in a massed choir event. They were part of a large choir of 8000 children singing with Stacey Solomon performing to approximately 20,000 people. The atmosphere and singing was amazing. The children had worked hard in rehearsals and did our school very proud. Well done St. Luke's Choir.

Drumming

Our Year 6 African Drumming group performed recently at the Mitchell Art Centre in Stoke and they were fantastic. This was such a success we have recently been part of a bid so that children can have more opportunities with African drumming. This was successful so every Wednesday 20 of our children are taught by Mr Will. This will culminate in working with another school in Stoke performing at festivals around Stoke in the Summer.

Building Work

Our number on roll continues to grow so we are very pleased that the snow has kept away to enable our building work to continue. We are still on track to have it all completed by the Summer holidays. It is a very exciting time at St. Luke's and we are working with the children to think of how to design our new library including choosing a theme. When the building work is completed we will be having an open day. Dates and times of this will be announced in the Parish News in the Summer.

Dinosaur Fun!

The children in Year 1/2 had a super enrichment day in school where they created their own fossils from clay, went on a dinosaur hunt and made Pterodactyl nests! It was a fun learning day and the children enjoyed dressing as dinosaurs and explorers.



Gardening Club

In December the Gardening Club planted an orchard of twelve fruit trees (apples and pears), next to our veg plot. The trees were provided by Newcastle Borough Council and Community Warden Mark Jones and a small team came to help plant them. The orchard is named 'Lucy's Orchard' after the young lady who suggested the project which at the time we thought was a bit ambitious!

Along with the trees we were given hundreds of daffodil, crocus and bluebell bulbs. These have been planted amongst the fruit trees and in the sensory garden.

Just before Christmas the Gardening Club held a candlelit mince pie and mulled wine evening in the Gazebo. The children positioned candles around the site, decorated a Christmas tree and assembled Mr. Gumley's wooden nativity scene in the centre of the garden below a canopy of trees. The Sensory Garden looked absolutely magical! They then helped serve the mince pies and mulled wine and sang Christmas songs. In the New Year the Christmas tree was planted, by the children, near the entrance to the Sensory Garden, in memory of Rev. Stuart Ansell.

Our most recent project has been the planting of a small 'Fernery'. Dinosaurs are currently inhabiting the Fernery - a small world activity for the children associated with the current ' Jurassic Forest' topic.

The Gardening Club has also been involved in hedge and holly planting in Silverdale Country Park, through Warden Andy Hunt, Aspire and Newcastle Lions Club.

PTFA

There is lots of excitement because St. Luke's PTFA have organised a 70's Night. This is open to all. Come along for a fun night. Details are on the flyer below:



Best wishes to everyone in the community of Silverdale and Parksite from everyone at St. Luke's Primary School.

www.st-lukes-silverdale.staffs.sch.uk

01782 297445



Silverdale Primary Academy

The best in everyone™

Part of United Learning

Racecourse, Silverdale, Newcastle-under-Lyme, Staffordshire, ST5 6PB Tel: 01782 297470

Hello everyone,

For those of you who do not know me, I wanted to introduce myself. I am the Headteacher at Silverdale Primary Academy .

We have had an exciting and eventful start to the new year as you may have noticed from our new signage, becoming a Primary Academy on 1st January . In doing so, we have joined United Learning, with whom we have been working closely since the Summer term. Due to these links already being established, the transition in January was very smooth enabling children to continue learning without disruption.

Joining United Learning has presented us with a number of exciting opportunities including networking with other schools to share best practise, being supported closely by the Outstanding Teaching School, Corngreaves Primary in Sandwell, an upgrade to wireless and six laptops in every classroom. We are very fortunate to have great staff who work incredibly hard to meet the needs of all of our children, and we have recruited two new Assistant Headteachers to come and join our team after February half term . Since September, we have established new systems and routines that ensure consistency for our children, allowing them to come to school to learn successfully in a safe and friendly environment. Our core values centre around caring for each other, developing strong relationships and supporting each other to learn, whilst we aim to inspire all our children to become successful independent learners. Visitors are always welcome!

We have a fabulous and strong group of supportive parents called 'FOSS', who act as our PTFA. It is our joint aim to involve the community in our school wherever we can - you may have seen a 'FOSS Santa' touring Silverdale over Christmas!

Two weeks ago our Year 5 learners returned from an amazing residential in Laches Wood. They returned full of confidence, having successfully conquered new experiences from den building to archery!

In the upcoming months we are beginning new sports clubs after school for all year groups, and holding an Easter Extravaganza, including Easter Bingo for all the family and workshops for parents to come into school to support their child in fun learning activities.

An application for our Nursery is currently available online at <http://www.staffordshire.gov.uk/education/schoolsandcolleges/admissions/nursery/NurseryAgedSettings.aspx> to be completed by 3rd March 2014 .

Do please keep a look out for the launch of our brand new website in the next few weeks and feel free to get in touch to come and visit our thriving school.

Lindi Nejrup



Silverdale Country Park

After the great successes of the tree planting events leading up to Christmas, 3 more tree planting events are planned for Feb and March. Knutton St Mary Primary School, Regents College and the Newcastle Countryside Project are joining Aspire and Silverdale Country Parks volunteers to plant trees on 25th Feb and PM training are joining Silverdale Country Park volunteers on 27th Feb to plant trees. These 2 events in February should complete the planting of the 3500 trees donated to Silverdale Country Park by Aspire Housing. In early March we are also planning a final tree planting event for this winter with the Newcastle Lions who have arranged a further 420 donated trees from The Woodland Trust to be planted near the Heritage Park housing on Silverdale Country Park with help from volunteers from both the Lions and Silverdale Country Parks volunteers.



Assuming we get all the trees in the ground that will mean volunteers will have planted 5280 trees on Silverdale Country Park this winter which is an enormous achievement. As Ranger for the country park I can't thank our volunteers enough for their hard work and we really appreciate the donations of trees from various organisations such as Aspire. The new woodland areas link existing wildlife habitats on the park so that wildlife have corridors to move around the park and the planting days have been great community days full of fresh air, exercise and some well earned cups of tea.



If you are interested in joining the volunteers on Silverdale Country Park we meet each week from 10am til 1pm on Wednesdays and Thursdays and advertise weekend work parties once a month on our website and on notice boards on the park. Silverdale Country Park is owned by charity 'The Land Trust' and managed by Charity 'Groundwork West Midlands' so community support has been vital in creating such a wonderful country park.

Looking forward to April we have some wildflower seed to the park by Newcastle Under Lyme Borough Council which we will be planting with volunteers to create a new 700SqM wildflower meadow area on the corner of the park between St Lukes Church and the new Heritage Park housing.

Andrew Hunt

Ranger Silverdale Country Park

Follow us on: www.silverdalecountrypark.org.uk

Groundwork West Midlands, Groundwork Enterprise Centre, Lingard Street, Moorland Road, Stoke on Trent, ST6 1EB.

Tel: 07769 259404

andrew.hunt@groundwork.org.uk



DAVE LUNT

THE LAWNMOWER MAN

**Garden Maintenance
Services**

Lawn Maintenance

Hedge Pruning

Fencing

Jet Washing

General Tidying

One off jobs or
maintenance programmes
Very competitive rates

Reeves Installations

Electrical Work—fully qualified and
Part P registered

Kitchens

Bathrooms/Wetrooms

Bedrooms

Plastering

Tiling—Walls and Floors



23 years Experience

Tel: 01782 698069

Mobile: 07872329405

AFFORDABLE APPLIANCES

**REPAIRS
SERVICE**

RENTALS WITH FREE REPAIRS

SALES OF NEW AND

RECONDITIONED APPLIANCES

NO CALL OUT CHARGE

WASHERS/COOKERS/DRYERS

81 HIGH STREET,
SILVERDALE
01782 711966

Debs

Domesticated *Calling All Ladies*

Deb's Home Help is reliable
and can help with all your needs.

I do gardening, painting and deco-
rating, cleaning and ironing

Full Public Liability
Insurance and CRB checked

For a competitive quote call
Deb on 07525 168140 or

Email:
austin.deborah@ymail.com

Pet Parade

Pet food and accessories

Poultry food Wild bird food

Frontline and Drontal available

Frozen dog and reptile food

Special orders taken

Fishing tackle and bait coming soon



The Parade

Silverdale

Next to the Post Office

01782 619009



C.T. TYRES

New and Part-Worn Tyres
Car, 4x4 and Light Commercials
Puncture Repair
Wheel Balancing

Stonewall Industrial Estate

Silverdale

ST5 6NR

TEL: 01782 631732



ROAD SKILLS DRIVING SCHOOL

Proprietor Mr S. D. Johnson. Dip.DI

Pass your L test

Stuart Johnson can help you.

** Pass the test quickly and easily*

** Learn to drive without spending a fortune*

** Become a safer driver for cheaper insurance*

** Learn at your own pace*

** All our courses are designed to offer structured, affordable training regardless of age or experience.*

Call Stuart for details 01782 751202

Email: stuartjohnson1@aol.com

www.roadskillsdrivingschoolnewcastle-under-lyme.co.uk



Ageing Well Project

Gentle Chair-Based Exercise

Adding years to life and life to years!

Would you like to boost your physical, emotional, social well being, also reduce the risk of falling?

Come and join one of our low mobility exercise groups. Cornerstones Community Centre, Silverdale

Every Monday 10.00am.

1 hour of exercise

£1.75 per session

For more information contact Karen Cattell

01782 200739

Summer Word Search



I	W	L	V	Q	F	R	I	E	N	D	S	F	T	Q	X	M	E	T	K
G	Q	R	S	P	A	H	N	J	S	X	X	X	M	V	B	B	E	U	W
Z	N	K	L	M	L	S	T	U	L	L	T	Z	S	A	N	D	A	L	S
N	J	I	L	N	W	A	M	F	P	S	S	T	F	H	H	V	D	S	H
L	F	X	N	E	F	M	Y	L	N	U	K	R	A	P	R	E	T	A	W
Q	I	B	H	E	E	A	K	I	N	M	C	G	A	A	G	G	O	B	U
I	R	Q	O	R	D	G	M	G	N	N	O	L	E	M	R	E	T	A	W
W	E	D	F	A	W	R	L	I	N	G	Z	S	R	H	I	P	G	D	A
L	W	F	N	D	T	A	A	Y	L	G	H	E	T	S	E	C	K	G	N
U	O	R	N	Z	S	I	C	G	U	Y	Y	U	F	L	I	G	L	N	Y
D	R	Q	D	S	P	S	N	A	G	D	Y	Q	M	E	N	I	H	I	O
Q	K	R	E	B	P	M	A	G	W	O	K	E	L	E	O	Y	U	P	T
Q	S	S	K	V	R	E	P	N	O	F	L	B	N	P	I	N	T	M	K
O	G	H	D	C	K	O	Z	L	D	T	N	R	Q	O	T	U	P	A	Z
S	W	B	O	R	P	L	O	U	M	C	Z	A	K	V	A	J	Y	C	A
A	C	N	E	S	C	A	B	W	J	P	A	B	J	E	C	D	B	Q	E
E	R	L	I	J	G	N	I	M	M	I	W	S	V	R	A	L	S	Q	V
X	A	C	S	M	E	Y	A	D	U	I	Y	T	S	V	T	N	X	R	
X	L	B	A	S	E	B	A	L	L	E	J	S	J	L	B	M	F	B	F
E	L	T	B	V	R	N	E	E	R	C	S	N	U	S	E	I	P	T	W

Barbeques
Baseball
Boating
Camping
Family
Fireworks
Friends

Gardening
Playing
Popsicle
Relax
Sandals
Sandcastle
Sleepovers

Summer
Sunglasses
Sunscreen
Swimming
Vacation
Watermelon
Waterpark

Send the completed grid, along with your name, address, phone or email to: The Parish Clerk, Simon Knobbs, 50 Priory Road, Westlands, Newcastle ST5 2EN 01782 633719

Closing date for entries 15/04/2014—£10 Gift Voucher is the prize!

Your Parish Councillors

Mrs E. Braithwaite, 396 Silverdale Road, ST5 6EG, Tel: 623095

Mr G O Cairns, 33 Bath Road, Silverdale. ST5 6QX Tel: 631175

Mr S. Colclough, 12 Tregew Place, Silverdale, ST5 6PG Tel: 661564

Mr R J Egan, 153, High Street, Silverdale ST5 6LJ Tel: 627529

Mr C Hilton, 32 High Street, Silverdale. ST5 6NG Tel: 711802

Mrs B J Lamb, 21 May Street, Silverdale ST5 6LZ Tel: 636458

Mr M A Nadin, 300 High Street, Silverdale. ST5 6JU Tel: 612757

Dr T O'Neill, 14 Ashbourne Rd. Silverdale ST5 6RL Tel: 712830

Mr G C Snell, 29 Vale Street, Silverdale ST5 6QB Tel: 638476

Mr L Welsh, 11 Bridge Street, Silverdale ST5 6NQ Tel: 662421

The Parish Clerk, to whom all correspondence should be

addressed is:

Simon Knobbs, 50 Priory Road, Westlands, Newcastle ST5 2EN

01782 633719

Email *silverdaleparish@hotmail.com* Website:

www.silverdaleparish.org.uk